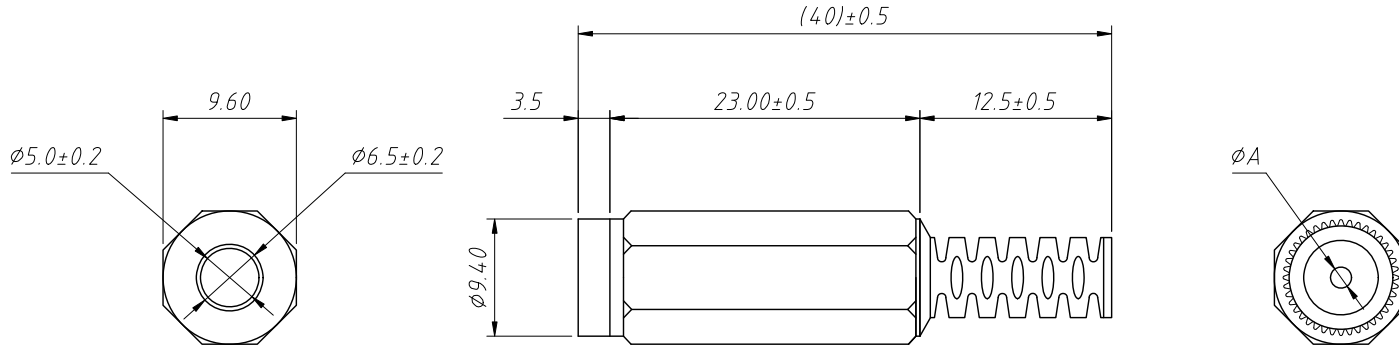


1  
RoHS Compliance

6	7	8
REV	SYM	Revision Record
V0	KLS01105	New Version Release
Appr.	Jenny	Date
		2024-09-10



Material:  
Housing:P-E (Black)  
Contact:Brass, nickel plated

Electric:  
Contact Resistance: $0.03m\Omega$ , Max  
Insulation Resistance: $100M\Omega$ , Min  
Pressure:AC500V (50Hz) / 1 minute  
Rated Load:DC30V, 1.0A  
Actuating Force: $3 \sim 20N$   
Life:5000 times  
Operating Temperature: $-30^{\circ}C \sim 70^{\circ}C$

Part No.	DC Power Plug	A
L-KLS1-DCP-03-2.1A	2.1mm	2.1
L-KLS1-DCP-03-2.5A	2.5mm	2.5
L-KLS1-DCP-03-3.5A	3.5mm	3.5

Order Information:  
L-KLS1-DCP-03-XXA

L: RoHS  
DC Plug  
DC Power Plug  
See Annex

ANGLE TOLERANCE	PROJECTION	Description:
$\pm 3^{\circ}$		DC power plug connectors
GENERAL TOLERANCE	UNITS	KLS P/N:
x.x $\pm 0.30$	mm	L-KLS1-DCP-03-XXA
x.xx $\pm 0.20$	SHEET SIZE	NingBo KLS ELECTRONIC CO.,L TD.
x.xxx $\pm 0.10$	Draw:	
	Check:	