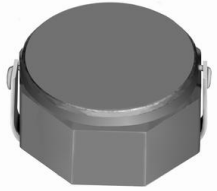


SMD Power Inductor CDRH8D43



Description

- Ferrite drum core construction.
- Magnetically shielded.
- L × W × H: 8.3 × 8.3 × 4.5 mm Max.
- Product weight: 0.93g(Ref.)
- Moisture Sensitivity Level: 1
- RoHS compliance.

Environmental Data

- Operating temperature range: -40°C ~ +100°C (including coil's self temperature rise)
- Storage temperature range: -40°C ~ +100°C
- Solder reflow temperature: 260 °C peak.

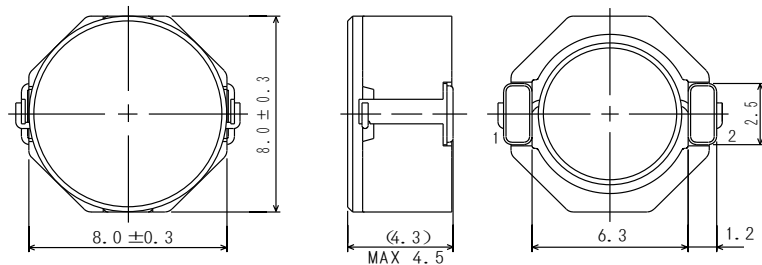
Packaging

- Carrier tape and reel packaging
- 13" diameter reel
- 500pcs per reel

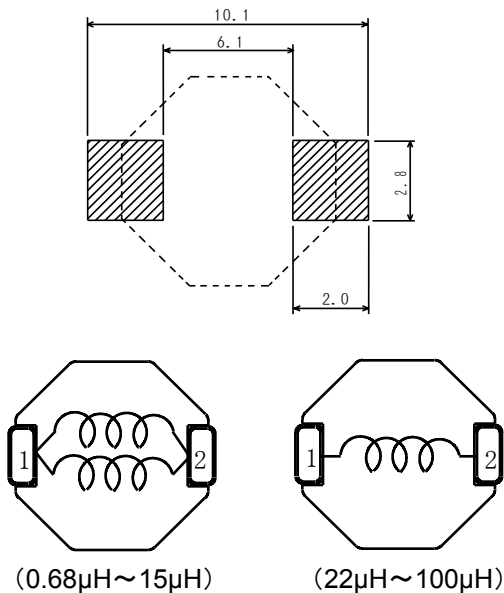
Applications

- Ideally used in Mobile phone, MP3, PDA , HDD, DSC/DVC, etc as DC-DC converter inductors.

Dimension - [mm]



Land pattern and Schematics - [mm]





Electrical Characteristics

Part Name	Stamp	Inductance (μH) [within] ※1	D.C.R. ($\text{m}\Omega$) Max. (Typ.) (at 20°C)	Saturation Current (A) ※2 (Typ.)	Temperature Rise Current (A) ※3
CDRH8D43NP-R68NC	R68	$0.68 \pm 35\%$	9.5(7.0)	9.0(10.80)	7.60
CDRH8D43NP-1R2NC	1R2	$1.2 \pm 35\%$	12.2(9.0)	8.0(10.50)	7.00
CDRH8D43NP-2R0NC	2R0	$2.0 \pm 30\%$	14(11)	7.0(9.00)	6.30
CDRH8D43NP-3R9NC	3R9	$3.9 \pm 30\%$	19(15)	5.9(7.50)	4.90
CDRH8D43NP-4R7NC	4R7	$4.7 \pm 30\%$	22(17)	5.6(7.20)	4.60
CDRH8D43NP-6R8NC	6R8	$6.8 \pm 30\%$	25(20)	4.4(5.80)	4.30
CDRH8D43NP-100NC	100	$10 \pm 30\%$	36(29)	4.0(5.50)	3.50
CDRH8D43NP-150NC	150	$15 \pm 30\%$	53(42)	2.9(3.60)	2.55
CDRH8D43NP-220NC	220	$22 \pm 30\%$	75(60)	2.6(3.25)	2.10
CDRH8D43NP-330NC	330	$33 \pm 30\%$	125(100)	2.2(2.60)	1.55
CDRH8D43NP-470NC	470	$47 \pm 30\%$	150(120)	1.8(2.25)	1.42
CDRH8D43NP-680NC	680	$68 \pm 30\%$	240(190)	1.5(1.76)	1.15
CDRH8D43NP-101NC	101	$100 \pm 30\%$	360(290)	1.3(1.55)	0.88

※1. Inductance measuring conditions at 100kHz.

※2. Saturation current: The DC current at which the inductance decreases to 65% of its nominal value.

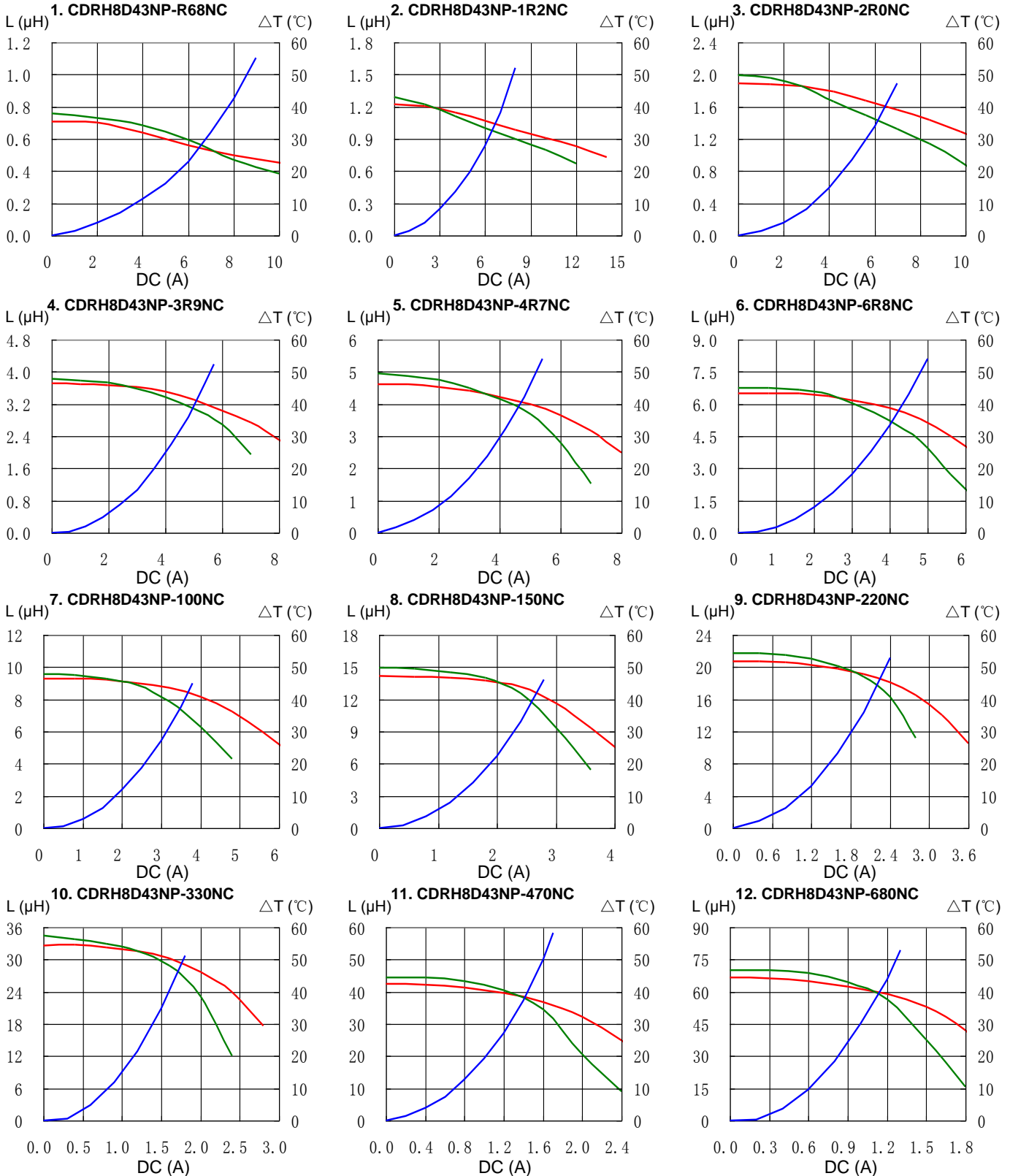
※3. Temperature rise current: The actual DC current at which the temperature rise is $\Delta t = 40^\circ\text{C}$. ($T_a = 20^\circ\text{C}$)

SMD Power Inductor CDRH8D43



Saturation Current & Temperature Rise Graph

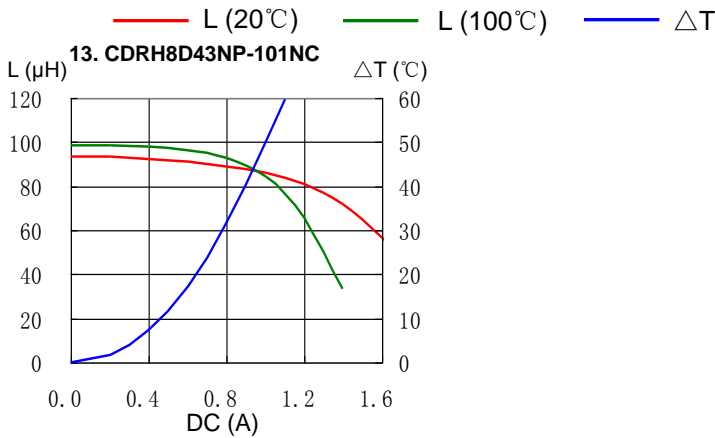
— L (20°C) — L (100°C) — ΔT



SMD Power Inductor CDRH8D43

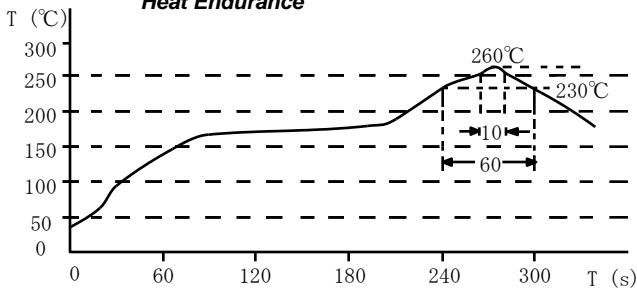


Saturation Current & Temperature Rise Graph

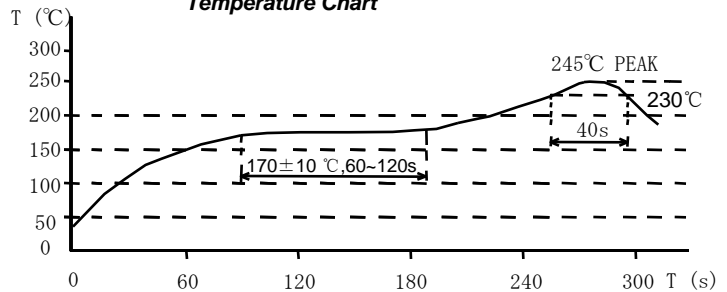


Solder Reflow Condition

Heat Endurance



Temperature Chart



Please refer to the sales offices on our website - <http://www.sumida.com>

Hong Kong

Tel.+852-2880-6781
FAX.+852-2565-9600
sales@hk.sumida.com

Saitama(Japan)

Tel.+81-48-691-7300
FAX.+81-48-691-7340
sales@jp.sumida.com

Chicago

Tel.+1-847-545-6700
FAX. +1-847-545-6720
sales@us.sumida.com

Shanghai

Tel.+86-21-5836-3299
FAX.+86-21-5836-3266
shanghai.sales@cn.sumida.com

Seoul

Tel.+82-2-6237-0777
FAX.+82-2-6237-0778
sales@kr.sumida.com

Obernzell

Tel.+49-8591-937-0
FAX. +49-8591-937-103
contact@eu.sumida.com

Shenzhen

Tel.+86-755-8291-0228
FAX.+86-755-8291-0338
shenzhen.sales@cn.sumida.com

Singapore

Tel.+65-6296-3388
FAX.+65-6841-4426
sales@sg.sumida.com

Neumarkt

Tel.+49-9181-4509-110
FAX. +49-9181-4509-310
infocomp@eu.sumida.com

Taipei

Tel.+886-2-8751-2737
FAX.+886-2-8751-2738
sales@tw.sumida.com

San Jose

Tel.+1-408-321-9660
FAX.+1-408-321-9308
sales@us.sumida.com