



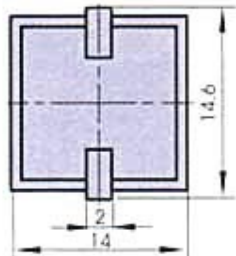
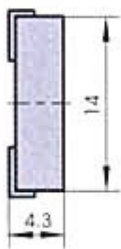
• **SFM-1440**



FEATURES:

- This item is designed for surface mounting applications
- The pin is plated with gold, which can meet the request of re-flow soldering process at 260°C for 30 seconds.
- Small size

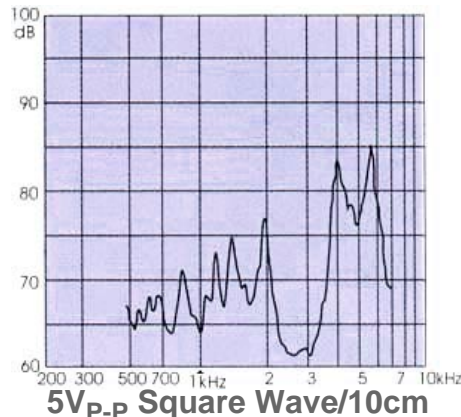
DIMENSIONS: (Unit: mm)



SFM-TERMINAL VERSION

RECOMMENDED SMD FOOT PATTERN

CHARACTERISTICS:



ELECTRICAL SPECIFICATIONS :

Model No.	SFM-1440
Min. Sound Pressure Level (dB)	75 /4.0kHz /5Vp.p Square Wave /10cm
Capacitance at 1000Hz (nF)	10 ± 30%
Allowable Input Voltage (Vp.p)	20
Max. Consumption (mA)	2 /4.0kHz /5Vp.p Square Wave
Resonant Frequency (kHz)	4.0 ± 0.3
Operating Temperature (°C)	-20 ~ +85
Case Material/Colour	PPS/Black
Weight (g)	1.1

PACKING INFORMATION:

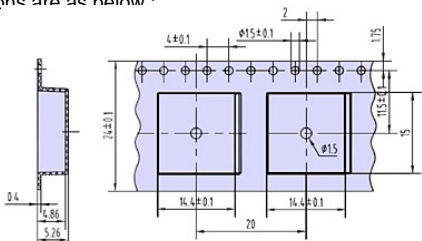
Packing	10000 pcs per export carton
Carton Size	50.5 X 29 X 16 cm
G. Weight	16.4 kgs
N. Weight	11 kgs
N. Weight	11 kgs

PACKING INFORMATION:

TAPE TYPE INFORMATION:

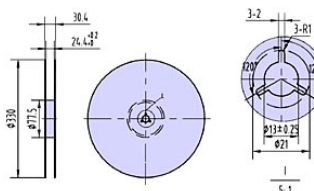
The design for such tape packing was executed under standard IEC -286-3

The material of the tape is polystyrene in black color. detailed dimensions are as below :



DIMENSIONS OF THE ROLLING PLATE:

The material of the rolling plate is in paper;
The dimensions of the rolling plate are as below:



PACKING DIMENSIONS AND QUANTITY:

- The rolling plate is put into a 340X335X35mm inner packing box and is packed with 650 pcs of the transducer per plate.
- The dimension of the outer carton is 400X350X350mm containing 10 inner boxes with a total quantity of 6,500 pcs of the transducer.
- The total gross weight per carton is 12.7Kgs,while net weight is 7.2Kgs.