



HIGH EFFICIENCY RECTIFIER

HER201 THRU HER208

VOLTAGE RANGE
CURRENT

50 to 1000 Volts
2.0Ampere

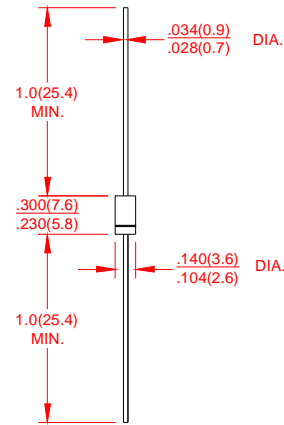
DO-15

FEATURES

- Low coat construction
- Fast switching for high efficiency.
- Low reverse leakage
- High forward surge current capability
- High temperature soldering guaranteed:
260°C/10 secods/.375"(9.5mm)lead length at 5 lbs(2.3kg) tension

MECHANICAL DATA

- Case: Transfer molded plastic
- Epoxy: UL94V-O rate flame retardant
- Polarity: Color band denotes cathode end
- Lead: Plated axial lead, solderable per MIL-STD-202E method 208C
- Mounting position: Any
- Weight: 0.014ounce, 0.39 grams



Dimensions in inches and (millimeters)

MAXIMUM RATINGS AND ELECTRICAL CHARACTERISTICS

- Ratings at 25°C ambient temperature unless otherwise specified
- Single Phase, half wave, 60Hz, resistive or inductive load
- For capacitive load derate current by 20%

	SYMBOLS	HER 201	HER 202	HER 203	HER 204	HER 205	HER 206	HER 207	HER 208	UNITS
Maximum Repetitive Peak Reverse Voltage	V_{RRM}	50	100	200	300	400	600	800	1000	Volts
Maximum RMS Voltage	V_{RMS}	35	70	140	210	280	420	560	700	Volts
Maximum DC Blocking Voltage	V_{DC}	50	100	200	300	400	600	800	1000	Volts
Maximum Average Forward Rectified Current 0.375"(9.5mm) lead length at $T_A=50^\circ\text{C}$	$I_{(AV)}$	2.0								Amp
Peak Forward Surge Current 8.3mS single half sine wave superimposed on rated load (JEDEC method)	I_{FSM}	60								Amps
Maximum Instantaneous Forward Voltage @ 1.5A	V_F	1.0			1.3	1.5	1.7			Volts
Maximum DC Reverse Current at Rated DC Blocking Voltage	$T_A=25^\circ\text{C}$	5.0								μA
	$T_A=125^\circ\text{C}$	250								
Maximum Full Load Recovery Current,full cycle average 0.375"(9.5mm)lead length at $T_L=55^\circ\text{C}$	$I_{R(AV)}$	100								μA
Maximum Reverse Recovery Time(NOTE 1)	t_{rr}	50				75			ns	
Typical Thermal Resistance (NOTE 2)	C_J	30				20			PF	
Typical Thermal Resistance(NOTE 3)	$R_{\theta JA}$	40								$^\circ\text{C/W}$
Operating Junction Temperature Range	T_J, T_{STG}	(-55 to +150)								$^\circ\text{C}$

Notes:

1. Test Condition: $I_F=0.5\text{A}$, $I_R=1.0\text{A}$, $I_{RR}=0.25\text{A}$
2. Measured at 1 MHz and applied reverse of 4.0 volts.
3. Thermal resistance from junction to ambient with .375"(9.5mm)lead length, P.C.B. mounted.



HIGH EFFICIENCY RECTIFIER

HER201 THRU HER208

VOLTAGE RANGE
CURRENT

50 to 1000 Volts
2.0Ampere

RATING AND CHARACTERISTIC CURVES HER201 THRU HER208

FIG.1-TYPICAL FORWARD CURRENT DERATING CURVE

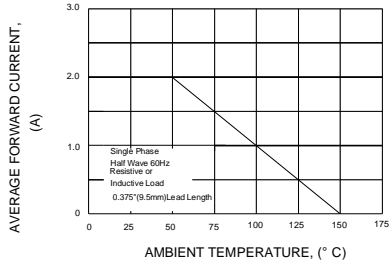


FIG.2-MAXIMUM NON-REPETITIVE PEAK FORWARD SURGE CURRENT

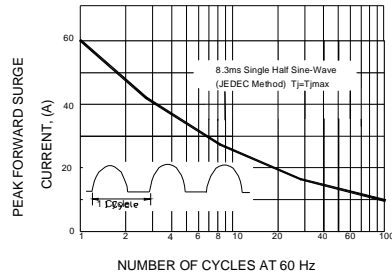


FIG.3-TYPICAL INSTANTANEOUS FORWARD CHARACTERISTICS

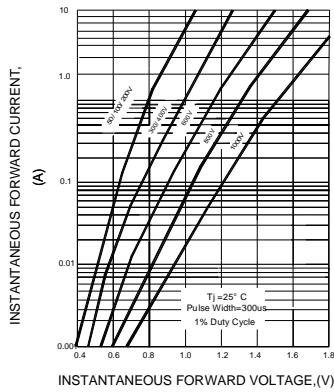


FIG.4-TYPICAL REVERSE CHARACTERISTICS

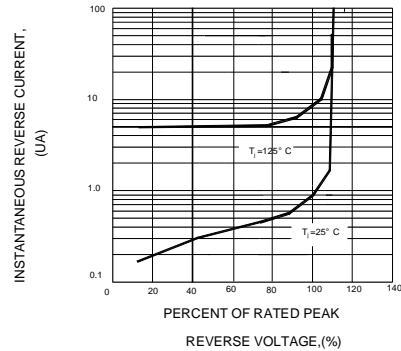


FIG.5-TYPICAL JUNCTION CAPACITANCE

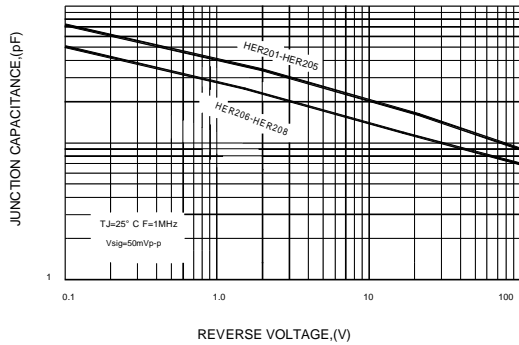
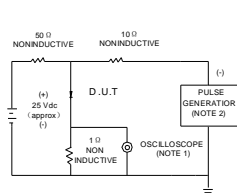


FIG.6-TEST CIRCUIT DIAGRAM AND REVERSE RECOVERY TIME CHARACTERISTIC



NOTE: 1.Rise Time =7ns max.Input Impedance=1megohm.22pF
2.Rise time=10ns max.Source Impedance=50 ohms

