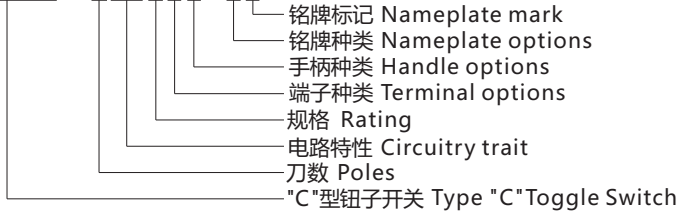


Medium Toggle Switch KN3 Series



型号说明 Ordering Information

KN3 (C) - 102APE-B2



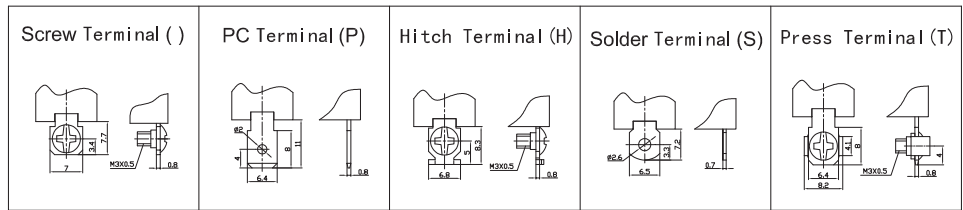
- 规格 Rating: () 10A 125VAC; 6A 250VAC
(A) 15A 125VAC; 10A 250VAC
(AA) 20A 125VAC; 15A 250VAC
- 接触电阻 Contact Resistance: 50mΩ max
- 绝缘电阻 Insulation Resistance: 500VDC 1000MΩ min
- 耐电压 Dielectric Strength: 1500VAC, 1Minute
- 操作温度 Operating Temperature: -25°C ~ +85°C
- 电气寿命 Electrical Life: 10,000 Cycles

电路特性 Circuitry trait

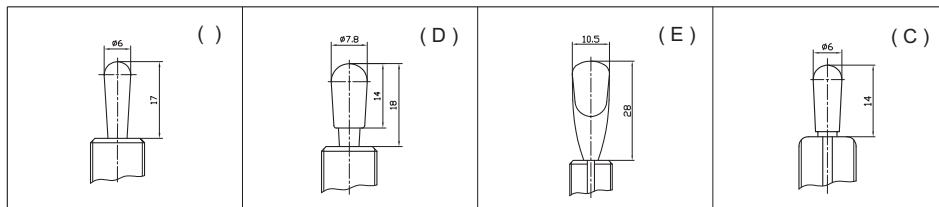
01	ON	-	OFF
02	ON	-	ON
12	ON	-	(ON)
03	ON	OFF	ON
13	ON	OFF	(ON)
23	(ON)	OFF	(ON)

() : 回弹指示 Indicates Momentary

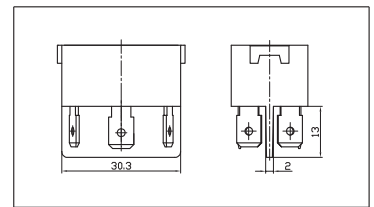
端子种类 Terminal options



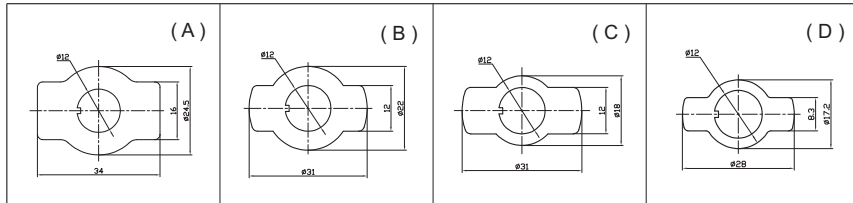
手柄种类 Handle options



特殊基座 Special base



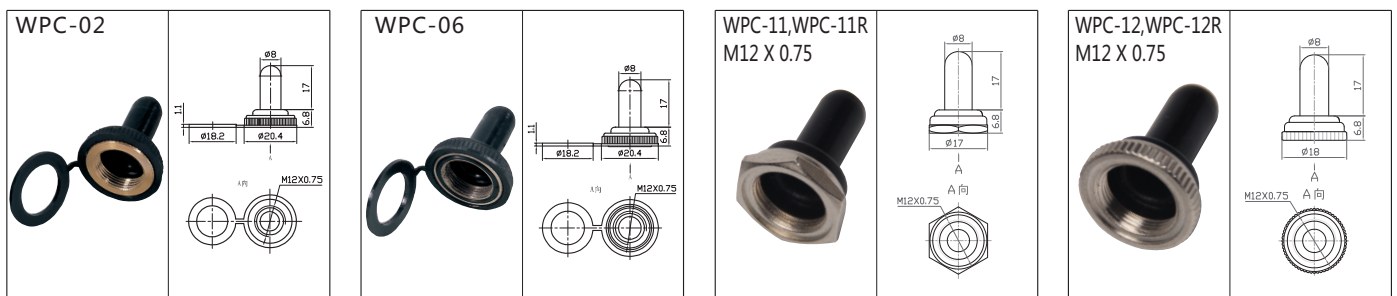
铭牌种类 Nameplate options



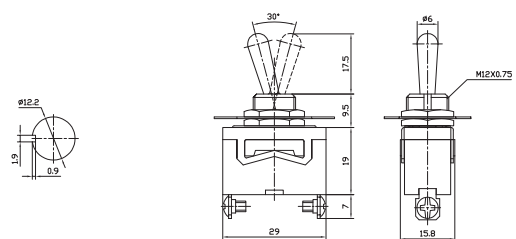
铭牌标记 Nameplate mark 基座颜色 Base color

1	ON - OFF	材料 Material	基座颜色 Base color	
2	ON - ON	电木 Bakelite	黑 Black	棕 Brown
3	ON - OFF - ON	聚碳酸酯 PC	红 Red	
		三聚氰胺 Melamine	蓝 Blue	

防水帽 Water proof cap



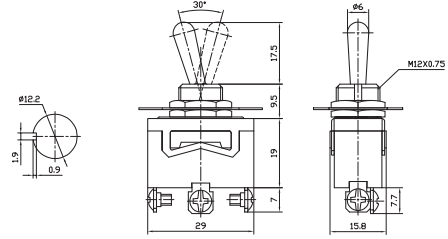
KN3(C)-101 ON-OFF
KN3(C)-101A ON-OFF
SPST 2P



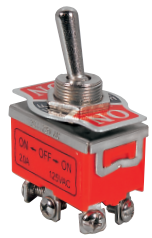
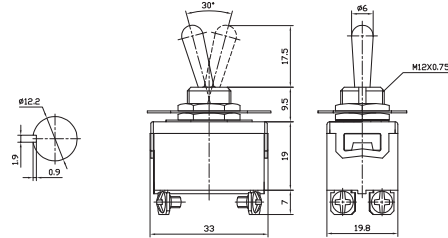
Medium Toggle Switch KN3 Series



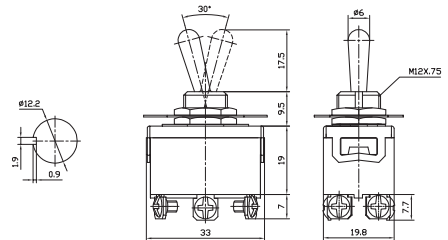
KN3(C)-102 KN3(C)-102A ON-ON
 KN3(C)-112 KN3(C)-112A ON-(ON)
 KN3(C)-103 KN3(C)-103A ON-OFF-ON
 KN3(C)-113 KN3(C)-113A ON-OFF-(ON)
 KN3(C)-123 KN3(C)-123A (ON)-OFF-(ON)
 SPDT 3P



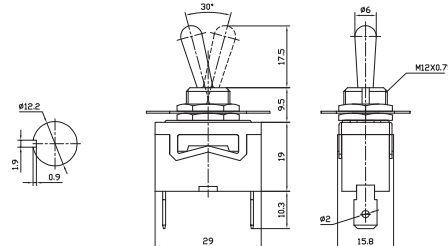
KN3(C)-201 ON-OFF
 KN3(C)-201A ON-OFF
 DPST 4P



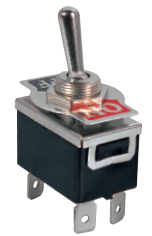
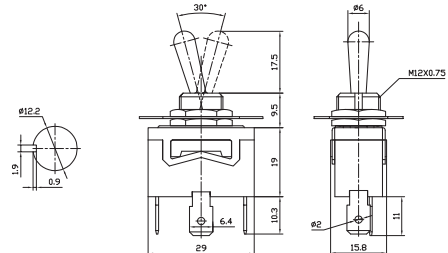
KN3(C)-202 KN3(C)-202A ON-ON
 KN3(C)-212 KN3(C)-212A ON-(ON)
 KN3(C)-203 KN3(C)-203A ON-OFF-ON
 KN3(C)-213 KN3(C)-213A ON-OFF-(ON)
 KN3(C)-223 KN3(C)-223A (ON)-OFF-(ON)
 DPDT 6P



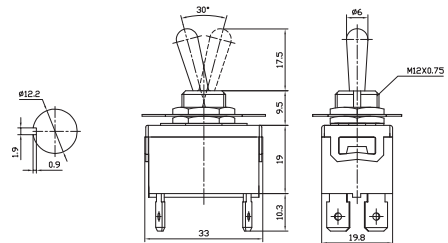
KN3(C)-101P ON-OFF
 KN3(C)-101AP ON-OFF
 SPST 2P



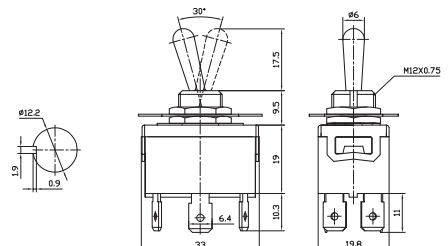
KN3(C)-102P KN3(C)-102AP ON-ON
 KN3(C)-112P KN3(C)-112AP ON-(ON)
 KN3(C)-103P KN3(C)-103AP ON-OFF-ON
 KN3(C)-113P KN3(C)-113AP ON-OFF-(ON)
 KN3(C)-123P KN3(C)-123AP (ON)-OFF-(ON)
 SPDT 3P



KN3(C)-201P ON-OFF
 KN3(C)-201AP ON-OFF
 DPST 4P



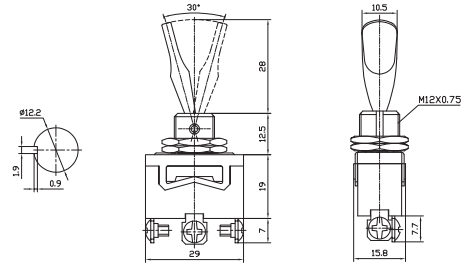
KN3(C)-202P KN3(C)-202AP ON-ON
 KN3(C)-212P KN3(C)-212AP ON-(ON)
 KN3(C)-203P KN3(C)-203AP ON-OFF-ON
 KN3(C)-213P KN3(C)-213AP ON-OFF-(ON)
 KN3(C)-223P KN3(C)-223AP (ON)-OFF-(ON)
 DPDT 6P



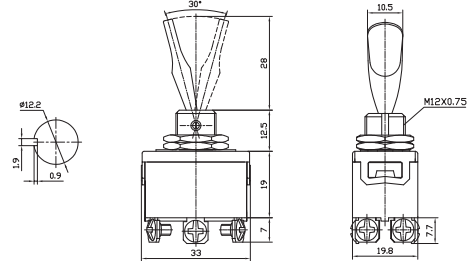
Medium Toggle Switch KN3 Series



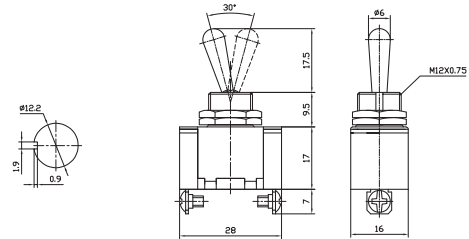
KN3(C)-102AE ON-OFF
KN3(C)-112AE ON-(ON)
KN3(C)-103AE ON-OFF-ON
KN3(C)-113AE ON-OFF-(ON)
KN3(C)-123AE (ON)-OFF-(ON)
 SPDT 3P



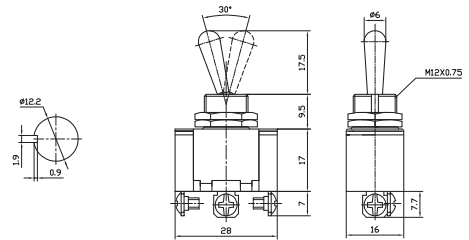
KN3(C)-202AE ON-OFF
KN3(C)-212AE ON-(ON)
KN3(C)-203AE ON-OFF-ON
KN3(C)-213AE ON-OFF-(ON)
KN3(C)-223AE (ON)-OFF-(ON)
 DPDT 6P



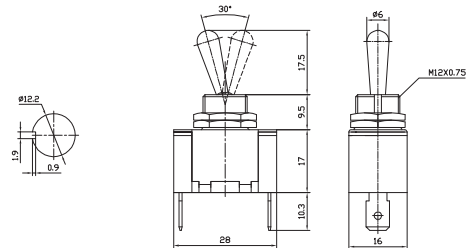
KN3(A)-101 ON-OFF
KN3(A)-101A ON-OFF
 SPST 2P
 UL Rating: 20A 125VAC; 10A 250VAC; 3/4HP 125/250VAC



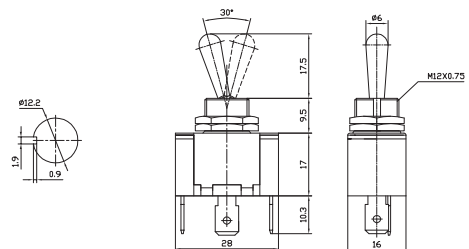
KN3(A)-102 **KN3(A)-102A** ON-OFF
KN3(A)-112 **KN3(A)-112A** ON-(ON)
KN3(A)-103 **KN3(A)-103A** ON-OFF-ON
KN3(A)-113 **KN3(A)-113A** ON-OFF-(ON)
KN3(A)-123 **KN3(A)-123A** (ON)-OFF-(ON)
 SPDT 3P
 UL Rating: 20A 125VAC; 10A 250VAC; 3/4HP 125/250VAC



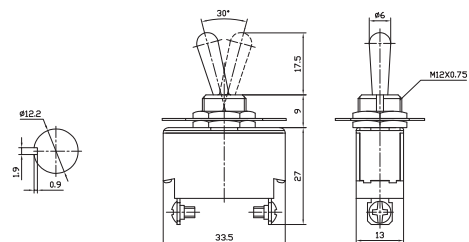
KN3(A)-101P ON-OFF
KN3(A)-101AP ON-OFF
 SPST 2P
 UL Rating: 20A 125VAC; 10A 250VAC; 3/4HP 125/250VAC



KN3(A)-102P **KN3(A)-102AP** ON-OFF
KN3(A)-112P **KN3(A)-112AP** ON-(ON)
KN3(A)-103P **KN3(A)-103AP** ON-OFF-ON
KN3(A)-113P **KN3(A)-113AP** ON-OFF-(ON)
KN3(A)-123P **KN3(A)-123AP** (ON)-OFF-(ON)
 SPDT 3P
 UL Rating: 20A 125VAC; 10A 250VAC; 3/4HP 125/250VAC



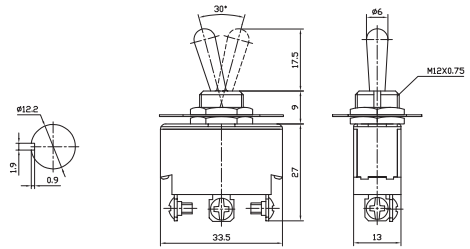
KN3(B)-101 ON-OFF
KN3(B)-101A ON-OFF
 SPST 2P



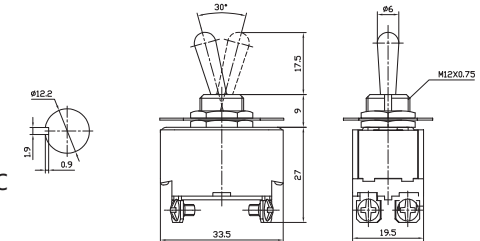
Medium Toggle Switch KN3 Series



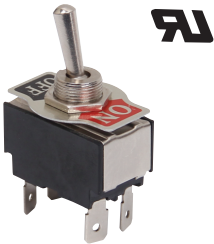
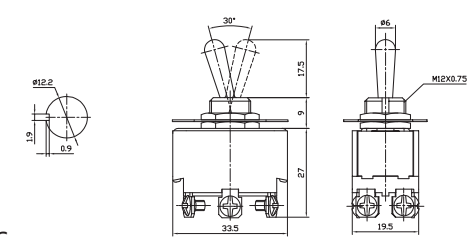
KN3(B)-102 KN3(B)-102A ON-ON
KN3(B)-112 KN3(B)-112A ON-(ON)
KN3(B)-103 KN3(B)-103A ON-OFF-ON
KN3(B)-113 KN3(B)-113A ON-OFF-(ON)
KN3(B)-123 KN3(B)-123A (ON)-OFF-(ON)
 SPDT 3P



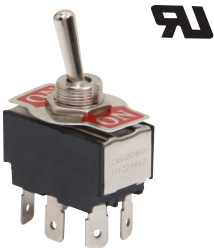
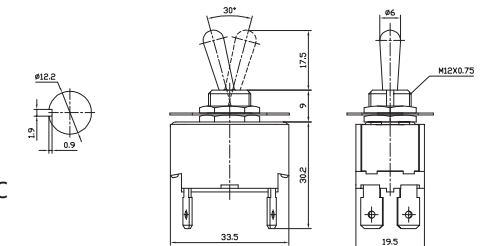
KN3(B)-201 ON-OFF
KN3(B)-201A ON-OFF
 DPST 4P
 UL Rating: 20A 125VAC; 10A 250VAC; 1-1/2HP 125/250VAC



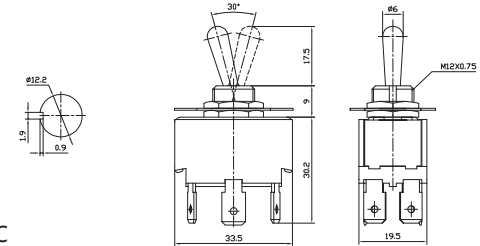
KN3(B)-202 KN3(B)-202A ON-ON
KN3(B)-212 KN3(B)-212A ON-(ON)
KN3(B)-203 KN3(B)-203A ON-OFF-ON
KN3(B)-213 KN3(B)-213A ON-OFF-(ON)
KN3(B)-223 KN3(B)-223A (ON)-OFF-(ON)
 DPDT 6P
 UL Rating: 20A 125VAC; 10A 250VAC; 1-1/2HP 125/250VAC



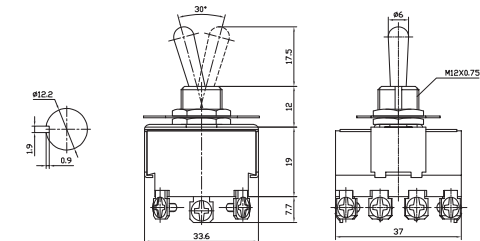
KN3(B)-201P ON-OFF
KN3(B)-201AP ON-OFF
 DPST 4P
 UL Rating: 20A 125VAC; 10A 250VAC; 1-1/2HP 125/250VAC



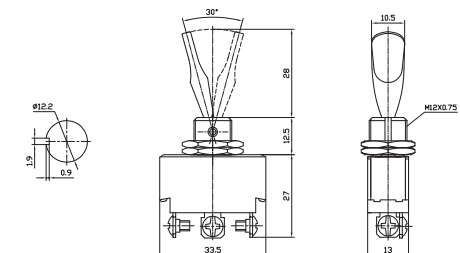
KN3(B)-202P KN3(B)-202AP ON-ON
KN3(B)-212P KN3(B)-212AP ON-(ON)
KN3(B)-203P KN3(B)-203AP ON-OFF-ON
KN3(B)-213P KN3(B)-213AP ON-OFF-(ON)
KN3(B)-223P KN3(B)-223AP (ON)-OFF-(ON)
 DPDT 6P
 UL Rating: 20A 125VAC; 10A 250VAC; 1-1/2HP 125/250VAC



KN3(B)-402 ON-ON
KN3(B)-402A ON-ON
KN3(B)-403 ON-OFF-ON
KN3(B)-403A ON-OFF-ON
 4PDT 12P



KN3(B)-102AE ON-ON
KN3(B)-112AE ON-(ON)
KN3(B)-103AE ON-OFF-ON
KN3(B)-113AE ON-OFF-(ON)
KN3(B)-123AE (ON)-OFF-(ON)
 SPDT 3P



Medium Toggle Switch KN3 Series



- KN3(B)-202AE ON-ON
 - KN3(B)-212AE ON-(ON)
 - KN3(B)-203AE ON-OFF-ON
 - KN3(B)-213AE ON-OFF-(ON)
 - KN3(B)-223AE (ON)-OFF-(ON)
- DPDT 6P

